



Turtle Handhold Set

by port:safety

Mechanical Data

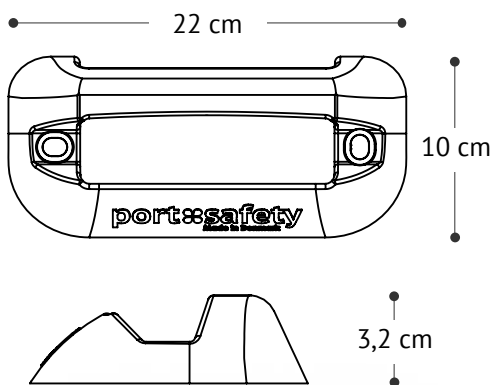
Weight	250 g/set
Dimensions	22 x 10 x 3,2 cm
Expected life time	+20 years

Material

Handhold	TPU, Chemical resistant UV Stable
Color	RAL1016

Impact Resistance

Impact	10 Tons
--------	---------



Purpose / Benefits

Minimize Trip Hazard: Designed to ensure the handhold does not pose a tripping risk.

Ease of Climbing: The handhold does not obstruct climbing to safety.

Durability: Can withstand vehicle impact and be driven over without damage.

Visibility: Remains visible without the need for maintenance.

Eco-Friendly: Stainless Steel handhold CO2 footprint 29kg/CO2e; Turtle Handhold set CO2 footprint 3,2kg/CO2e

Rejecting Mooring Lines: No snagging of mooring lines.

Non-Mooring Design: Ensures it cannot be used for mooring.

UV Resistance: TPU is full colored UV stabilized, color fading will be very limited.

Construction

Materials: Made from a combination of plastic and rubber, UV and chemical stable.

Water Drainage: Constructed to efficiently drain dirt into the basin.

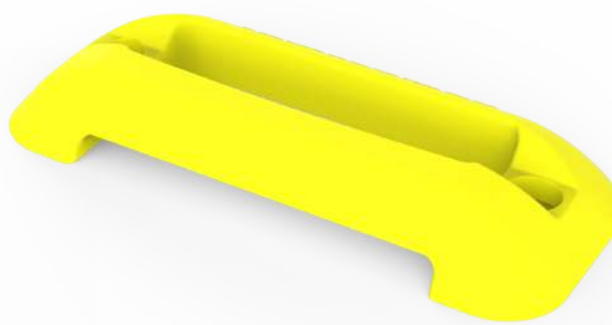
User-Friendly: Easy and intuitive to use.

Installation

Ease of Installation: Requires only 2 screws for secure installation.

Maintenance

No Maintenance Required: Designed to be maintenance-free.



Anti trip Hazard

Avoid trip hazard with low height.

Visibility

Remains visible without the need for maintenance.

Durability

Can withstand vehicle impact and be driven over without damage.